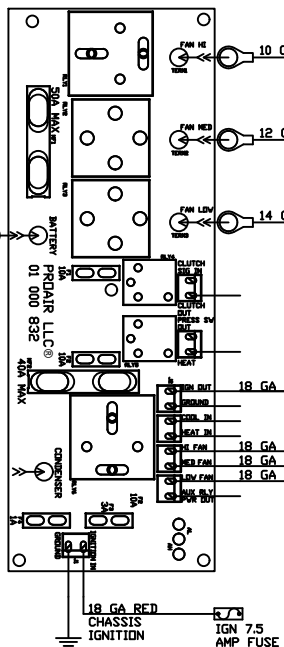


SYSTEM SCHEMATIC

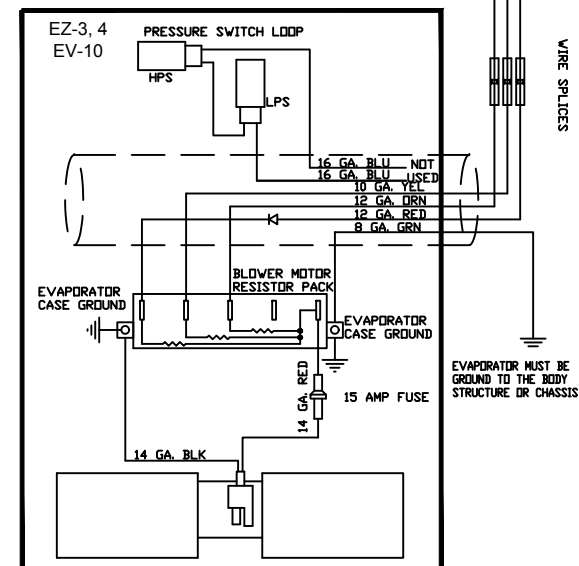
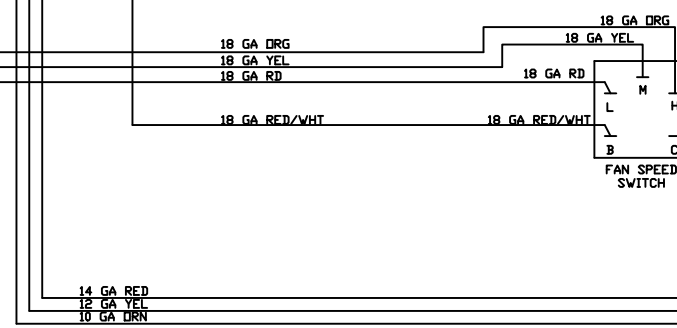
CIRCUIT BOARD NOTE: SEE 67 000 128 OR 67 000 136 FOR CONFIGURATION INFORMATION

BATTERY PROTECTED BY 125 AMP FUSE WITHIN 12" OF BATTERY SOURCE



NOTES:

- 1) ELECTRICAL PANEL MUST BE MOUNTED IN A DRY LOCATION WITH AN AMBIENT TEMP UNDER 150° F AND PROPER VENTILATION.
- 2) FORD 2010-PRESENT -AT ACCUM. : GREY W/YEL STRIPE
CHEVY AT SWITCH: GREEN W/WHITE STRIPE



WIRE SPLICES

EVAPORATOR MUST BE GROUND TO THE BODY STRUCTURE OR CHASSIS

PROPRIETARY & CONFIDENTIAL. UNPUBLISHED WORK COPYRIGHT PROTECTED PRO AIR LLC. PRO AIR, LLC CLAIMS PROPRIETARY RIGHTS IN THE MATERIAL DISCLOSED HEREON. NEITHER THIS DRAWING NOR ANY REPRODUCTION OR PORTION THEREOF MAY BE DISTRIBUTED OR USED TO MANUFACTURE ANYTHING SHOWN HEREIN WITHOUT PERMISSION IN WRITING FROM PROAIR, LLC.

REV. A

LET. NO.	17-293	RELEASED TO PRODUCTION REVISION	CEB	11/2/17	BY DATE
----------	--------	---------------------------------	-----	---------	---------

SIGNATURES		DATE
DRAWN	CEB	11/2/17
CHECKED	KFS	11/2/17



TITLE:	SCHEMATIC, WIRE
USAGE:	ACT 30T

PART NO.	40 000 694
SCALE:	1" = 1'-0" SIZE A
SHEET	1 OF 1