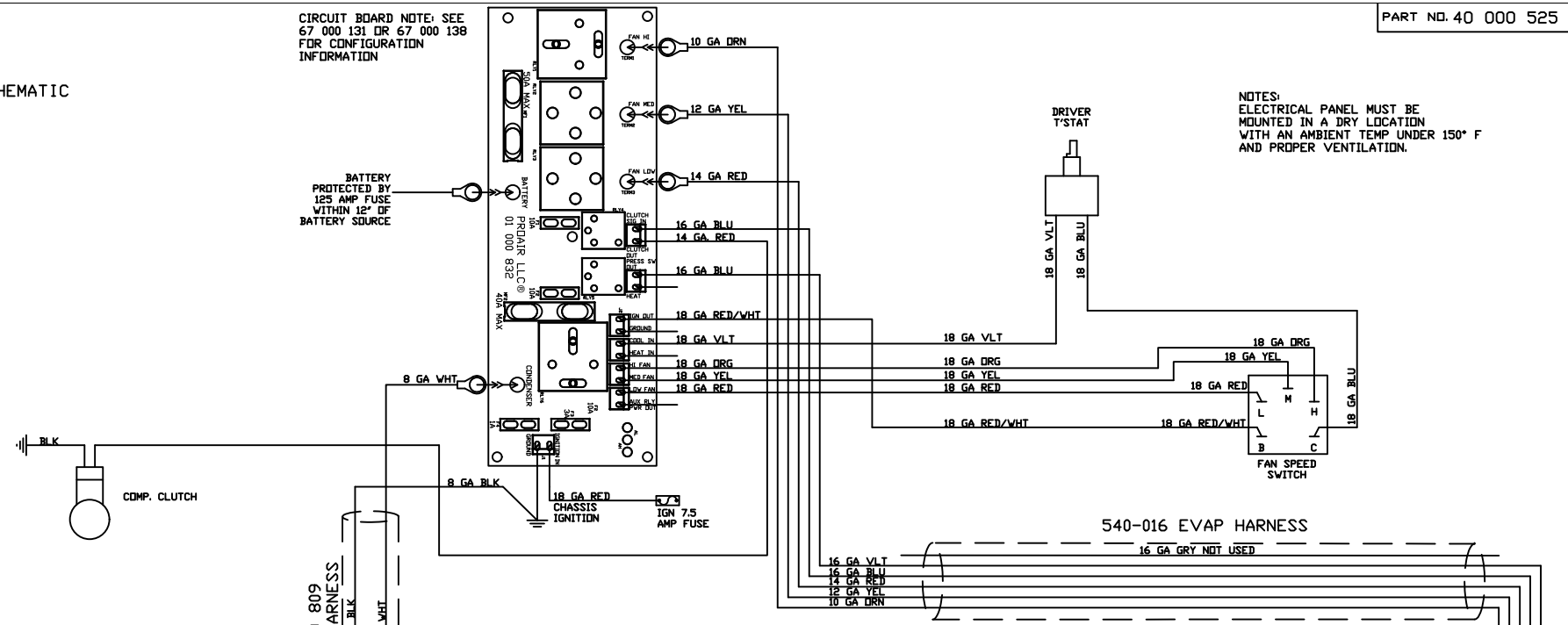


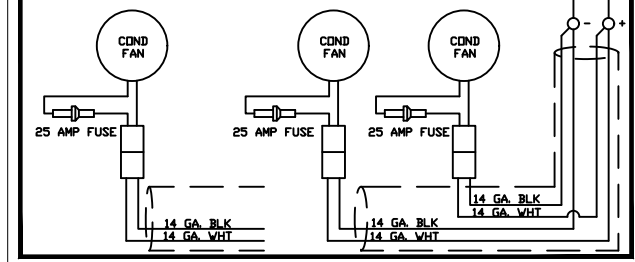
SYSTEM SCHEMATIC

CIRCUIT BOARD NOTE: SEE 67 000 131 OR 67 000 138 FOR CONFIGURATION INFORMATION

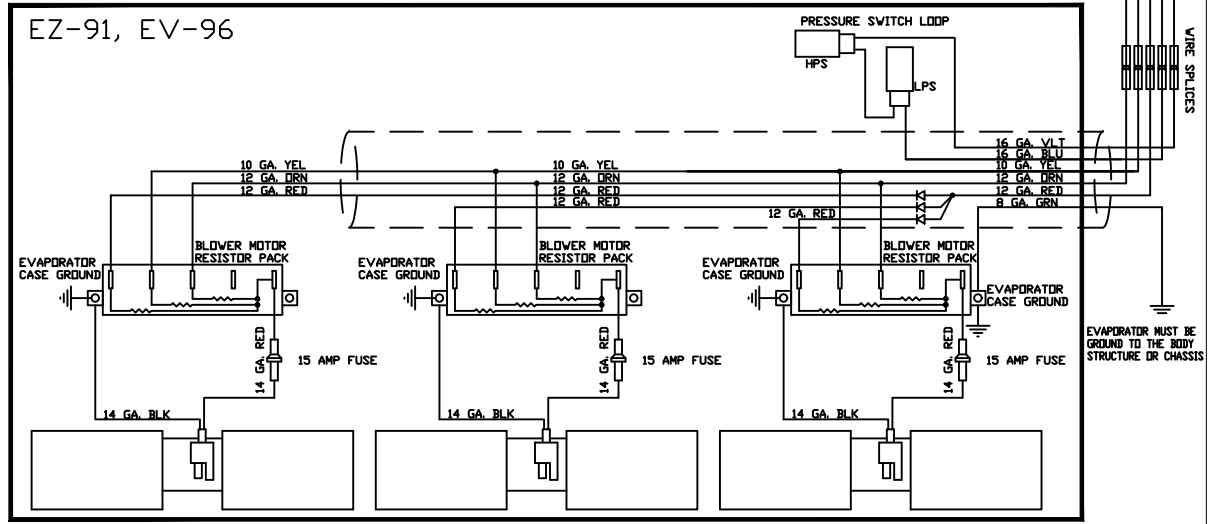
NOTES: ELECTRICAL PANEL MUST BE MOUNTED IN A DRY LOCATION WITH AN AMBIENT TEMP UNDER 150° F AND PROPER VENTILATION.



CS-3 / CR-3 CONDENSER



EZ-91, EV-96



PROPRIETARY & CONFIDENTIAL. UNPUBLISHED WORK. COPYRIGHT PROTECTED PRO AIR, LLC. PRO AIR, LLC CLAIMS PROPRIETARY RIGHTS IN THE MATERIAL DISCLOSED HEREIN. NEITHER THIS DRAWING NOR ANY REPRODUCTION OR PORTION THEREOF MAY BE DISTRIBUTED OR USED TO MANUFACTURE ANYTHING SHOWN HEREIN WITHOUT PERMISSION IN WRITING FROM PROAIR, LLC.

REV. C

LET.	NO.	REVISION	BY	DATE	SIGNATURES	DATE	TITLE	USAGE	PART NO.	SCALE	SIZE	SHEET	OF
C	17-144	EVAP AND COND UPDATE	CEB	6/5/17	DRAWN DAS	1/14/15	 2900 C.R. 6 W ELKHART, IN 46514	ACT 913 HD	40 000 525	1" = 1'-0"	A	1	1
B	16-045	UPDATE BOARD	CEB	2/18/16	CHECKED RA	6/5/17							
A	15-041	RELEASED TO PRODUCTION	MRM	11/24/15									