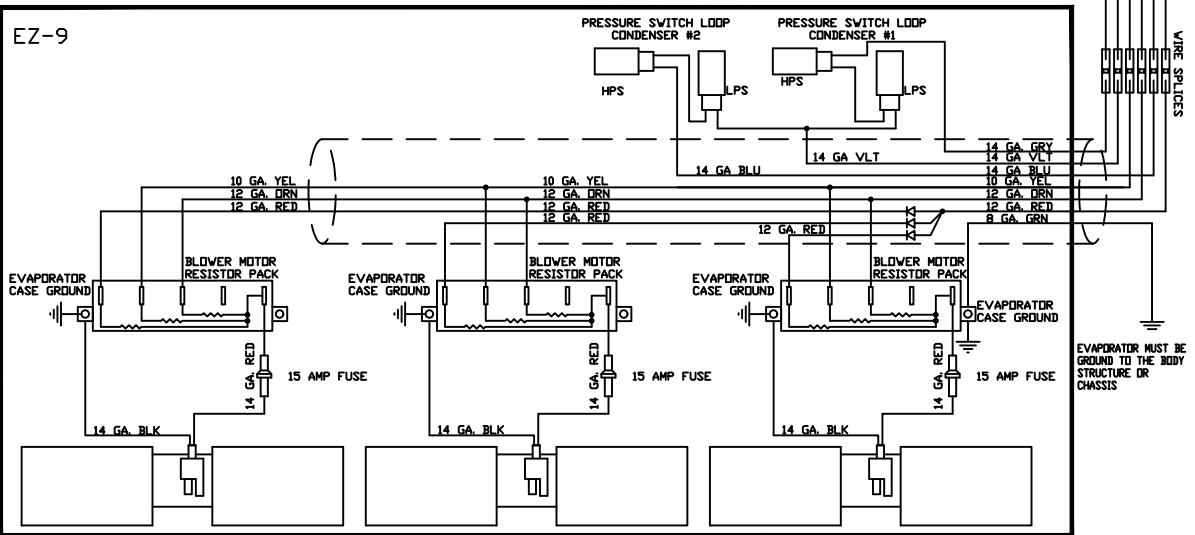
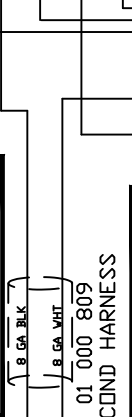
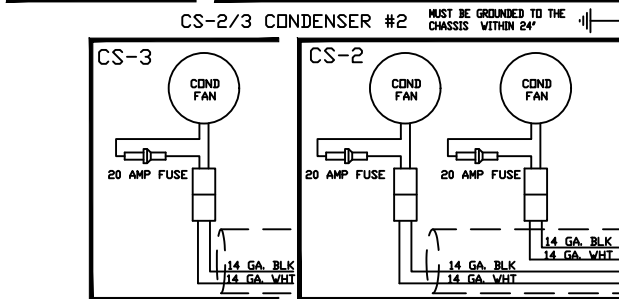
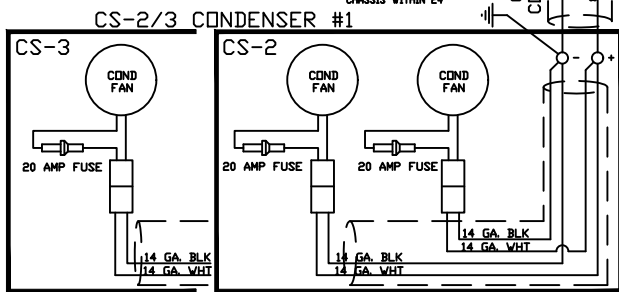
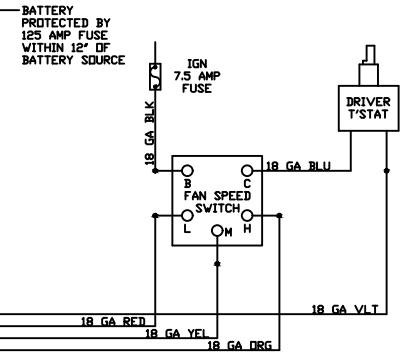
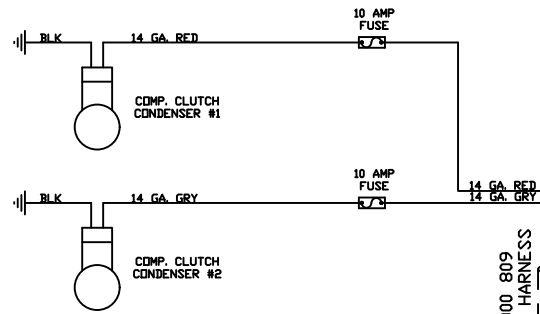
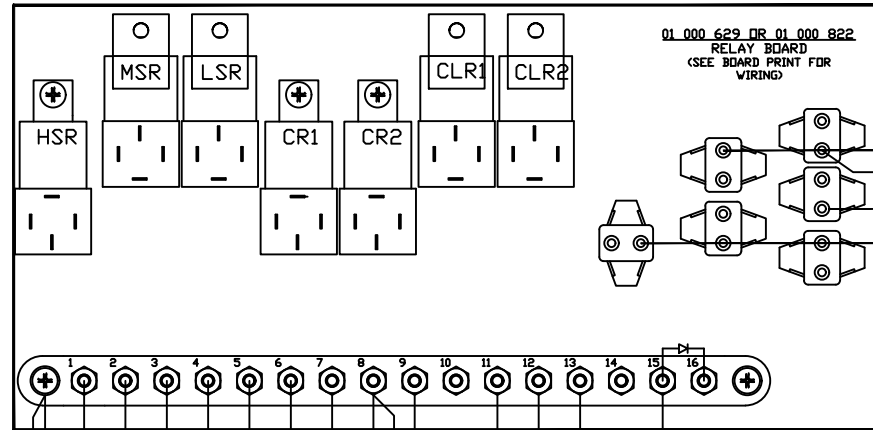


NOTES:
ELECTRICAL PANEL MUST BE MOUNTED IN A DRY LOCATION WITH AN AMBIENT TEMP UNDER 150° F AND PROPER VENTILATION.



PROPRIETARY & CONFIDENTIAL. UNPUBLISHED WORK COPYRIGHT PRO AIR LLC. PRO AIR, LLC CLAIMS PROPRIETARY RIGHTS IN THE MATERIAL DISCLOSED HEREON. NEITHER THIS DRAWING NOR ANY REPRODUCTION OR PORTION THEREOF MAY BE DISTRIBUTED OR USED TO MANUFACTURE ANYTHING SHOWN HEREON WITHOUT PERMISSION IN WRITING FROM PROAIR, LLC.

		SIGNATURES		DATE	TITLE:		PART NO. 40 000 399	
		DRAWN	DAS	12/18/14	SCHEMATIC, WIRE		SCALE: 1" = 1' - 0" SIZE A	
		CHECKED	RAI	6/5/17			SHEET 1 OF 1	
G	17-144	EVAP AND COND WIRE UPDATE		CEB	6/5/17			
F	16-037	UPDATE BOARD		CEB	2/12/16			
LET.	NO.	REVISION		BY	DATE			



USAGE: ACT 933 DM

REV. G